

Growatt ShineGPRS-X Quick Guide

T +86 0755 2747 1942

F +86 755 2747 2131

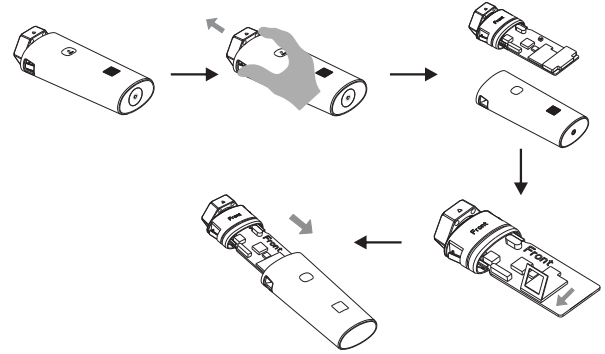
E service@ginverter.com

W www.growatt.com

GR-UM-181-A-00

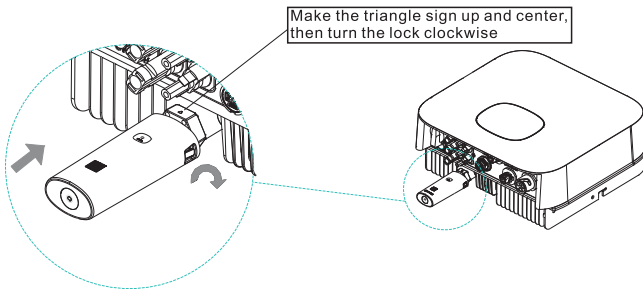
Step1. SIM Card Installation Step

1. Use finger to press the hook on the both sides of datalogger, remove the top cover and PCB board from the main body case;
2. Open the fixing piece on the SIM card holder, put into the SIM card, press the fixing piece to tight the holder.
3. Put back the PCB board and top cover, when hear the "click" means the top cover fixed with main body.



Step2. Electrical Connection

1. Rotate the top cover of inverter's USB interface to open it.
2. Rotate the head of the lock on the datalogger, make sure the triangle logo on the top of center;
3. Connect the USB interface of datalogger and inverter, make sure the triangle logo on the top. Press the head of lock and rotate it in clockwise direction until it tightened.



Step3. Open Inverter, Check the Connection State

1. After install the ShineGPRS-X, open inverter.
2. When the first time to install the ShineGPRS-X, the indicate light will flash red, when the communication between server and inverter is established, it will flash blue.

LED light flashing status description

LED Flashing Status	Working status
Red light flash	The communication between sever and inverter is normal, the inverter is connecting the server now
Blue light flash	Network communication normal

Step4. Registration and adding device

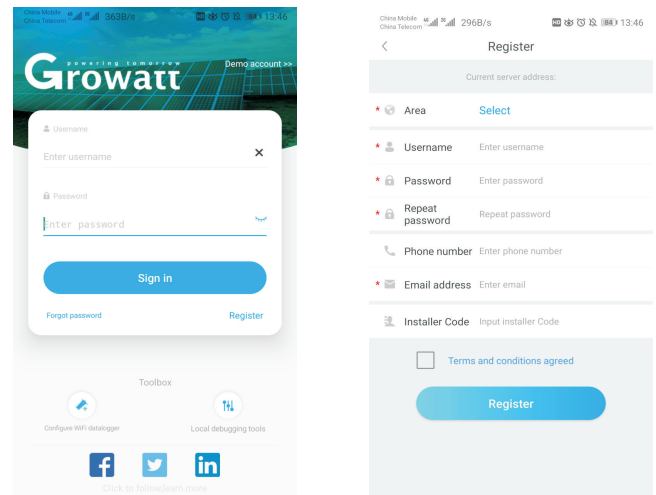
Scan the QR code below to download ShinePhone, also you can search ShinePhone in iOS or Google Play Store, download and install it.

Note:

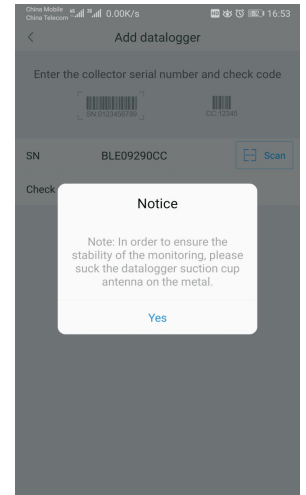
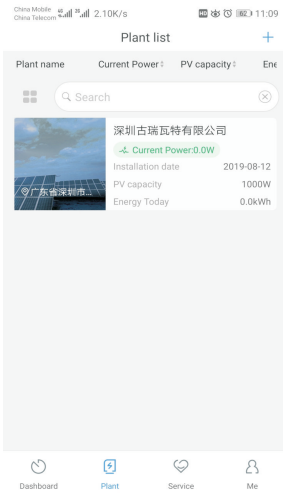
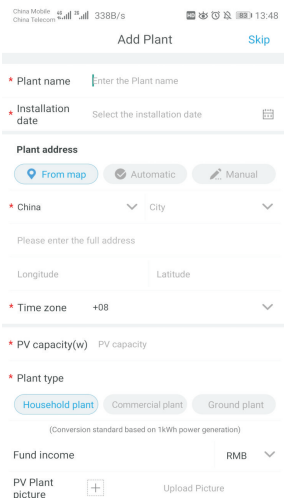
1. Make sure the version of it is the latest one;
2. The detail please refer to [http:// server-cn.growatt.com](http://server-cn.growatt.com).



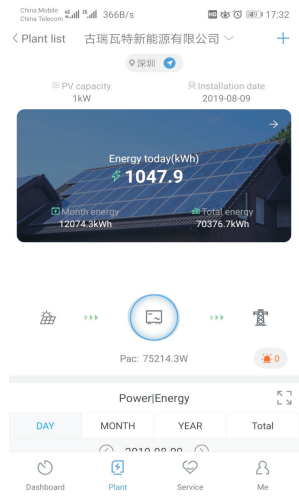
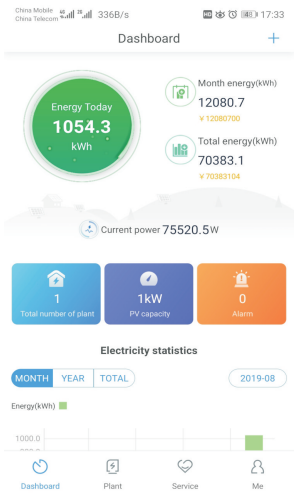
1. Follow the page prompts, fill in the required information and click "Register", it will jump to plant page.
Note: The phone is the important tool to find back the password and some other functions, please fill in the right phone number.



2. On "Plant List" page, click "add datalogger", it will jump to a page which used to add datalogger, click "Scan", scan the QR code of datalogger, when the page shows "Notice" page, click yes to finish the adding process.

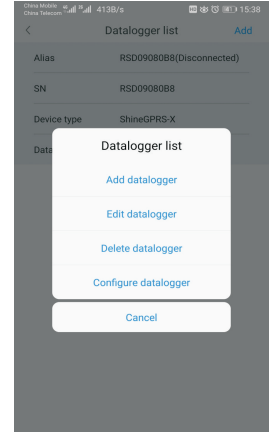
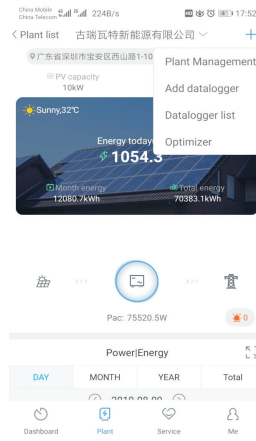


3. The parameters and information of PV system can be acquired from the "Plant List" and "Dashboard" page, such as daily energy, monthly energy etc.



4. If you need to add, check, delete datalogger or add plant, please click "+" on the top right.

- Note:
1. After add successful, ShineGPRS-X will connect the server automatically, during the configuration it will flash red light, when it turn to blue light flash, the configuration is successful.
 2. If the datalogger need to change the monitoring account, it need to delete the S/N of datalogger on the original account, only do this can the device add to another account.



Appendix: Quick troubleshooting

LED Flashing status	Working status	Troubleshooting
Blue light flash	Communication good	
Red light flash	Communication with inverter is good and it is connecting to server now.	If the red light flash for a long time, please check if the domain name and the port information is right or not.
Green light flash	The communication with inverter is abnormal and the communication with server is good.	Please check the connection between inverter and datalogger.
Blue light normally on	Datalogger abnormal	Change another datalogger.
Red light normally on	SIM card arrears or no signal	Check SIM card status.
Green light normally on	Failed to read SIM card	Check if the SIM card loose or damaged.
No light on	Communication abnormal	1. Check connection between inverter and datalogger. 2. Please check the domain name and the port information.